

R&S® USB Write Protection Utility

Installation Instruction



4066.5470.02 – 01

© 2011 Rohde & Schwarz GmbH & Co. KG

Muehldorfstr. 15, 81671 Munich, Germany

Phone: +49 89 41 29 - 0

Fax: +49 89 41 29 12 164

E-mail: info@rohde-schwarz.com

Internet: <http://www.rohde-schwarz.com>

Printed in Germany – Subject to change – Data without tolerance limits is not binding.

R&S® is a registered trademark of Rohde & Schwarz GmbH & Co. KG.

Trade names are trademarks of the owners.

Contents

1	General.....	5
2	USB Write Protection Installation.....	6
3	USB Write Protection Deinstallation.....	7

1 General

USB ports can pose a security threat in high-security locations. Generally, this threat comes from small USB pen drives (a.k.a. memory sticks, key drives, etc) which can be very easily concealed, yet can quickly read/write several GBytes of data.

The "R&S® USB Write Protection Utility" disables the write capability on any USB Port for storage devices. After installation and a reboot of the instrument, any USB Mass Memory Device which is plugged in, can not be written.

Should the need for the USB port write capabilities arise, uninstall the "R&S® USB Write Protection Utility". After reboot of the instrument writing to USB Mass Memory devices is enabled.

Preconditions

"The R&S® USB Write Protection Utility" works on instruments with Windows® XP SP2 only.

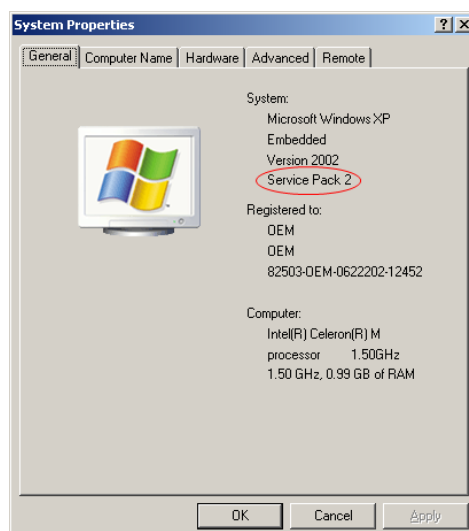


For installation of the utility you have to plug in a keyboard and a mouse into the instrument.

Check for Windows® XP SP2

Make sure that Windows® XP SP2 is installed on the instrument by checking the system properties in the Windows® control panel:

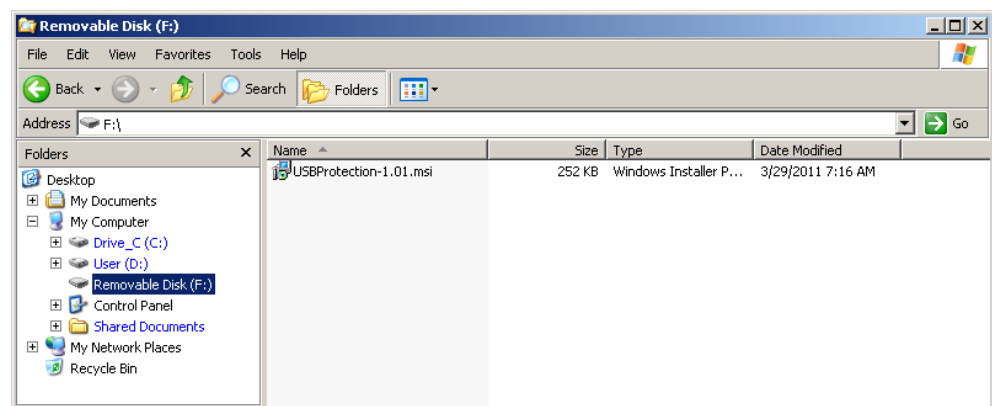
1. Press the CTRL and ESC keys
2. Select "Settings"
3. Select "Control Panel"
4. Select "System Properties"



2 USB Write Protection Installation

To start the installation procedure, proceed as follows:

1. Press keys ALT and F4 to shut down the GUI.
2. Select the "Start Menu" by pressing the CTRL and ESC keys and select the following entry "Log Off Instrument".
3. Confirm with "Log Off".
4. The log-on screen will be displayed. User name and password are necessary to log on:
 - a) User: Administrator
 - b) Password: RsEs4129WiMo
5. Press keys ALT and F4 to shut down the GUI.
6. Start the "Explorer" and select the directory which contains the copy of the "USB-Protection- 1.01.msi" file, as shown below:



7. Start the installation by selecting the file and pressing the RETURN key or by a mouse double click.

The installation starts and installs all necessary files onto the hard disk. Afterwards reboot the instrument to activate the USB write protection.

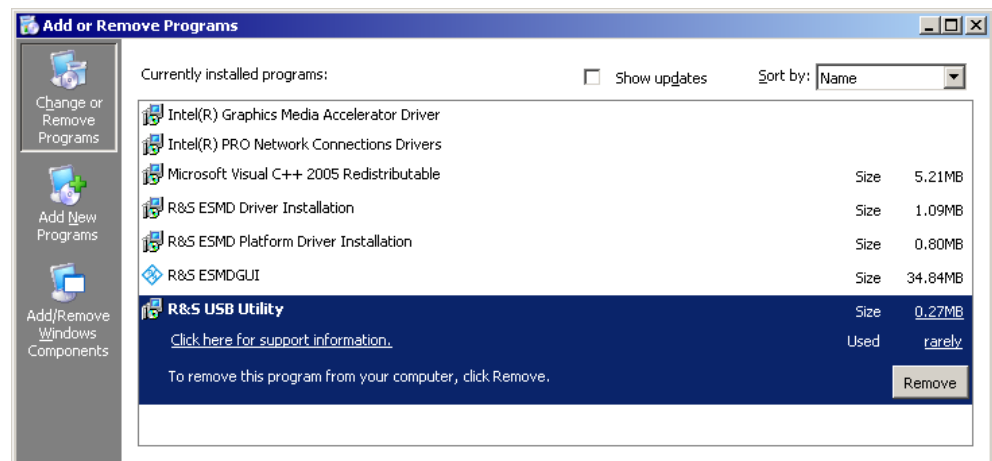


Do not make any user interaction during the update process.

3 USB Write Protection Deinstallation

To start the deinstallation procedure, proceed as follows:

1. Press keys ALT and F4 to shut down the GUI.
2. Select the "Start Menu" by pressing the CTRL and ESC keys and select the following entry "Log Off Instrument"
3. Confirm with "Log Off"
4. The log-on screen will be displayed. User name and password are necessary to log on:
 - a) User: Administrator
 - b) Password: RsEs4129WiMo
5. Press keys ALT and F4 to shut down the GUI.
6. Select the "Start Menu" by pressing the CTRL and ESC keys and select the following entries:
 - a) "Start"
 - b) "Settings"
 - c) "Control Panel"
 - d) "Add or Remove Programs"
7. Select the following entry and press the REMOVE button.



Afterwards the "R&S® USB Write Protection Utility" is deinstalled. To activate the changes reboot the instrument.